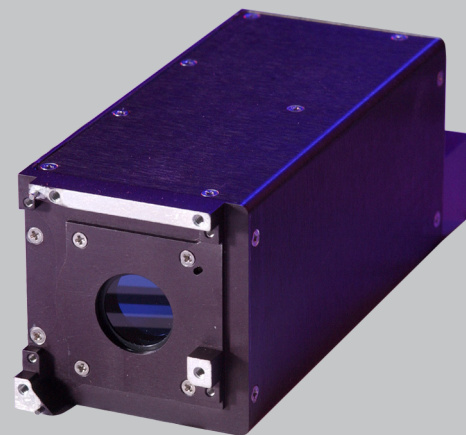
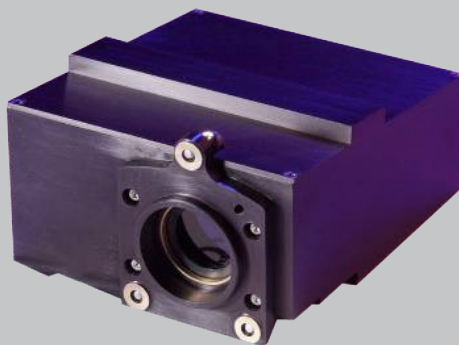
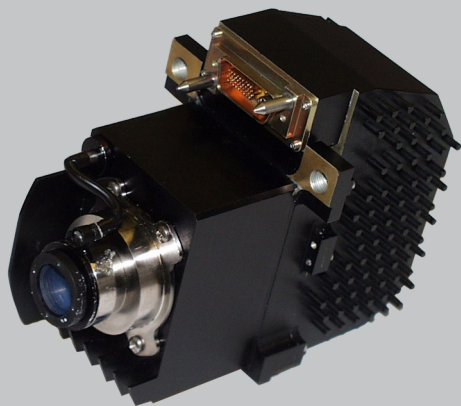


RS-170 IMAGE INTENSIFIED VIDEO CAMERAS



GO BEYOND WITH BALL.®

Ball Aerospace's image intensified video cameras represent the pinnacle of military all-light imaging performance. Using patented Enhanced Automatic Gain Control (E-AGC) and Anti-Blooming (ABT-21) image enhancement technologies, Ball's cameras provide high-resolution visible and near-infrared images under lighting conditions from daylight to overcast night.

OVERVIEW

These cameras are designed to perform in military ground, airborne, and naval environments. Their revolutionary performance enhances detail in dark areas of the image without compromising information in brighter areas of the scene, and delivers sharp, bloom-free pictures under the most difficult lighting conditions. Exceptional reliability has been consistently proven on fielded military platforms. The full product life cycle is supported by Ball's established depot facilities and organization. Long-term support and availability are backed by four decades of experience.

SPECIFICATIONS

ELECTRICAL SPECIFICATIONS

CCD Imager	2/3 inch interline transfer device, 768 (H) x 484 (V) pixels, 4:3 aspect ratio, 11.6 μm (H) x 13.6 μm (V) pixel size
Video Output	RS-170, 60 Hz interlaced: analog single-ended and differential
Usable Light Level	Overcast starlight to daylight
Sensitivity Control	Automatic or manual
Synchronization	Internal free-run or external Gen-Lock to composite sync or H and V inputs, TTL or RS-422
Horizontal Resolution	768 TVL
Spectral Response	450 to 910 nm
Communication	RS-422 command and status, asynchronous serial
Input Voltage	28 VDC standard, custom voltages available
Power	6 W

MECHANICAL SPECIFICATIONS

Configuration	Standard and custom packages available
Weight	380 g (typical)
Input Image Size (diagonal)	11.1 mm (2/3 inch format) or 16 mm (1 inch format), others available
Interface Connector	25 pin micro-miniature D typical

ENVIRONMENTAL SPECIFICATIONS

Operation Temperature	-40 to +71 °C standard (operation to +80 °C available)
Storage Temperature	-55 to +85 °C standard
Altitude	Up to 50,000 feet standard
Vibration and Shock	Ruggedized for military environment, tailored to each application

FEATURES

Exceptional low-light-level visible/NIR imaging

- High resolution, low halo GEN III thin film image intensifier
- Daylight to overcast starlight illumination
- Intensifier gate/gain and external iris controls (auto/manual)
- Analog and digital RS-170 video out
- Built-in test (BIT)

Anti-blooming provides ≥ 80 dB intra-scene dynamic range

- Enhanced automatic gain control improves night imagery

Power 6 W; Mass 380 g (MTS variant)

Ruggedized for land, sea, and air military environments

Options

- Single-, two-, and three-piece packages available
- High resolution analog and digital high-definition formats
- TEC-cooled photocathode for high operating temperatures



Conventional camera obscures potential threats. Their dynamic range is insufficient for high performance night imaging.



Ball technology reveals critical scene information and improves dynamic range with E-AGC, ABT, and special processing.