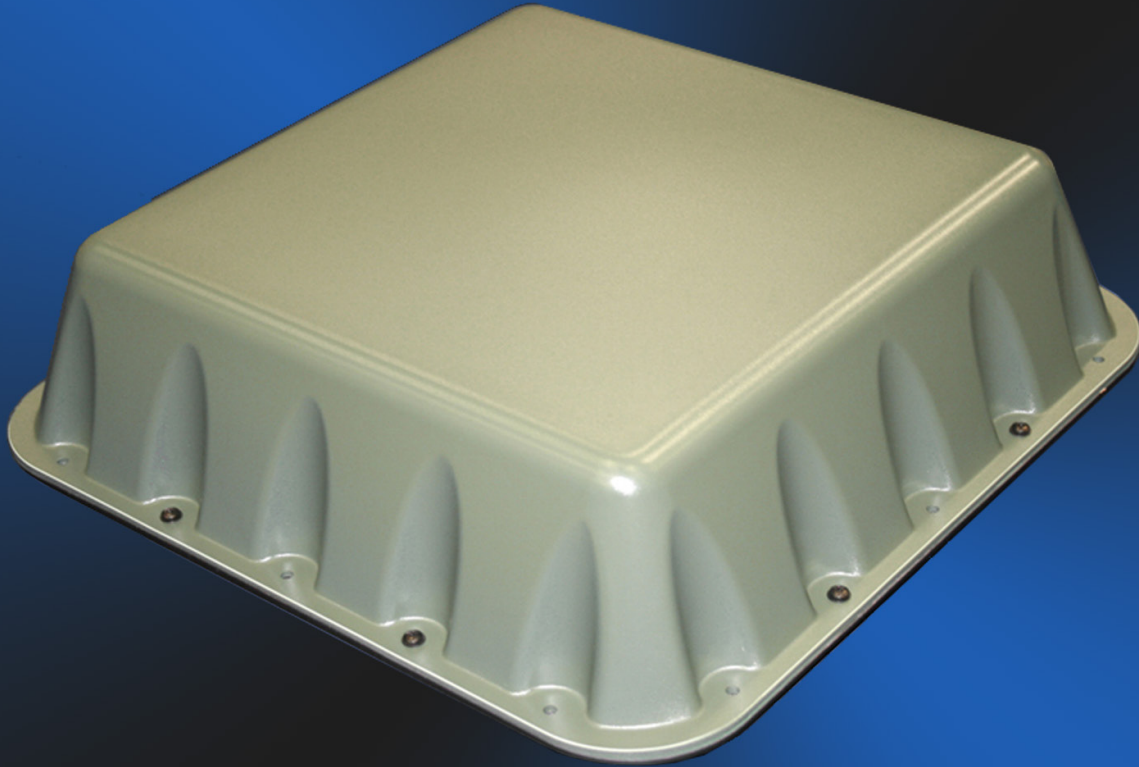


SILHOUETTE™ UHF SATCOM

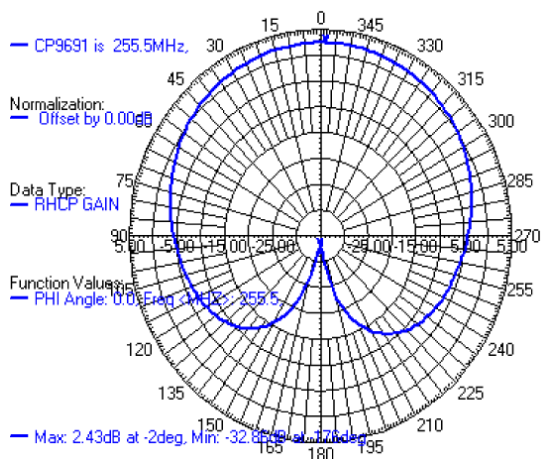


GO BEYOND WITH BALL.®

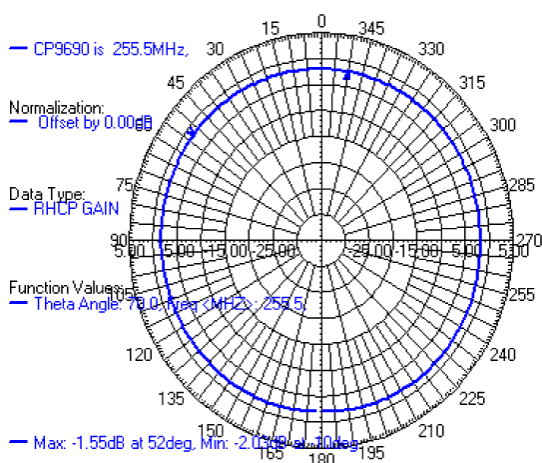
AN0973A

For tactical vehicles, the Silhouette™ antenna product line provides net-centric capability. An ultra-low profile clears the line of fire for remote controlled weapons, and makes for easy transport.

OVERVIEW



Elevation



Azimuth

SYSTEM PERFORMANCE

Performance Specifications

Frequency	243-318 MHz
Impedance	50 Ω
VSWR	≤2.0:1
Polarization	RHCP
Power Handling	100 W CW
Peak Gain	+2.5 dBic
Average Conic Gain (20° Elevation)	>-2.5 dBic
Average Conic Gain (10° Elevation)	>-3.5 dBil
Coverage	Upper Hemisphere (Omni)

Physical Properties

Length x Width x Height (inches)	18.5 x 18.5 x 4.7
Weight	<12.0 lbs
Connector	Type N, Female
Exterior Finish (CARC)	Fed-Std-595, 383 Green or 686 Tan. Other available

Environmental Qualifications

Temperature	-40° to +180° F
Altitude	25,000 ft
Humidity	MIL-810F Method 507.4
Chemical	MIL-810F Method 504
Salt Fog	ASTM B117
Sand and Dust	MIL-810F Method 510.4
Branch Strike	50 mph
Vibration	MIL-810F Method 514.5
Shock	MIL-810F Method 516.5

ADVANTAGES

- Optimized for tactical vehicles, combat vehicles and maritime on-the-move applications
- Rugged and low-profile
- Impact resistant UV stabilized polycarbonate radome
- Minimal visual signature
- Cost competitive

INTERFACE DRAWING

